

# Introducing a Cat Tool to Translate: Wordfast

*Fika Apriliana, Ardiyarso Kurniawan, Sandy Ferianda, and Fidelis Chosa Kastuhandani*

<https://doi.org/10.24071/ijels.v2i1.351>

## ABSTRACT

This article aims at introducing CAT tools to those prospective translators who are familiar with with the tools for the first time. Some of the CAT tools must be paid for while some others are free. This article is to inform the readers about the list of free and paid CAT tools, advantages and disadvantages of those tools. One does not need special training for using a free CAT tool while using the paid CAT tools, one needs some special preparation. This article is going to focus more on Wordfast Pro as the second most widely used CAT tools after SDLTrados. Wordfast Pro is a paid software the functioning of which is based on the creation of a Translation Memory which facilitates and speeds up the translator's work. This article is going to briefly explain the advantages of Wordfast Pro and the steps of using it. The translation example is presented to reveal the different translation results of Wordfast Pro as a paid CAT tool and OmegaT as a free CAT tool. Therefore, the article will facilitate those who intend to know more about Wordfast Pro and start using it.

Keywords: CAT tools, OmegaT, Wordfast Pro

## INTRODUCTION

Computerized translation has attracted the attention of a large number of people who work directly or indirectly on translational issues such as professional translators, teachers, linguists, researchers and future translators. A CAT tool is generally defined as a computer program that helps to translate text documents more efficiently. The decision-taking task does not correspond to the computer but the decision-taking is the human translators' duty (Carrove, 1999).

In a commercial setting, the combination of machine translation and human collaboration needs to have some advantage over machine translation and human translation taken independently. Otherwise, this combination will be abandoned. Some of the advantages that Melby (1996) in Carrove (1999) saw are (1) lower cost, (2) higher speed and (3) increased quality through consistent use of terminology.

When using CAT tools, it is immediately clear which parts of the text must be translated; the unchanging portions are transferred accurately and directly; the time savings due to repeating expressions is huge; and expressions are translated consistently. However, there are many other functions that offer the translator a number of other advantages.

When using CAT tools, it is immediately clear which parts of the text must be translated because CAT tools use segmentation. CAT tools *segment* the text to be translated in segments (sentences) and present the segments in a convenient way, to make translating easier and faster. In Wordfast Pro, for example, each segment is presented in a special box, and the translation can be entered in another box in the right side of the source text. Through special "fuzzy search" features the search functions of Wordfast Pro even find segments which do not match 100%. This saves a lot of time and effort and

helps to make a coherent and consistent translation.

Cocci (2007) stated that CAT tools contain no program based on machine translation and no ready-made bilingual dictionary. The "dictionary" is created by the translator with each translation and revision. She explained further that looking for a term with a CAT tool means searching through the previously created translation memory. Another function of CAT tools is to save the translation units in a database, called *translation memory* (TM), so that they can be re-used for any other text, or even in the same text. The result of the search is not the equivalent term in the other language, but

the text string in which the term occurs. The process is certainly slower and more complicated compared to machine translation, but the result is more interesting in the long run.

**CAT TOOLS**

The list of available CAT software is large, and the extended features of these programs are varied. Most of the software is in paid version. It means the translator has to pay amount of money in order to be able to use the software. Meanwhile, some of CAT tools are available for free. The translators can get the software freely by downloading the software through internet.

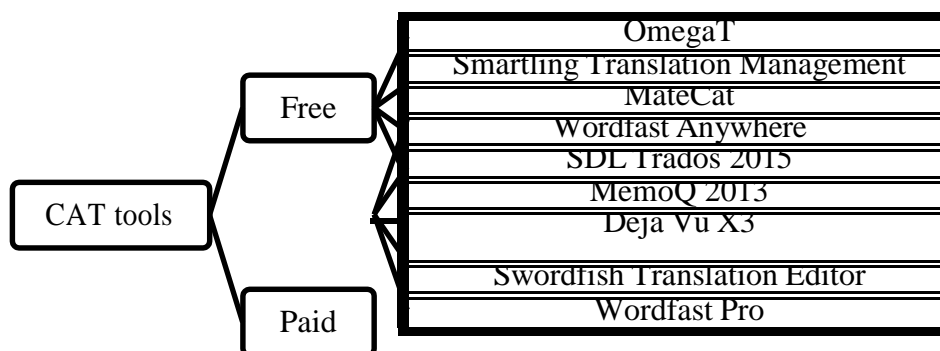


Figure 1. List of Free and Paid CAT Tools

**Free CAT Tools**

Some of CAT tools are now available for free and all the translators and translation agencies can easily get a variety of these tools over the internet. According to proz.com, some of the free CAT tools are OmegaT, Smartling Translation Management, MateCat, and Wordfast Anywhere.

OmegaT is a free and open source multiplatform CAT tool with fuzzy matching, translation memory, keyword search, glossaries and translation leveraging into updated projects. Smartling

Translation Management is a cloud-based translation software platform that simplifies and streamlines the translation process. MateCat is an enterprise-level, online CAT tool designed to make post-editing and outsourcing easy and to provide a complete set of features to manage and monitor translation projects. It is supported by the integration of the largest collaborative translation memory and the best machine translation. Wordfast Anywhere is designed to freelance translators from their home or office and allow them to work on projects from anywhere they have internet connection. Users can upload TM assets to a secure,

password-protected workspace and access them from virtually any device that has a web browser.

The free CAT tools have some similar characteristics. Translation Memory (TM) management as a powerful feature is also integrated in free CAT tools. The translation memory is essentially a database of pre-translated terms in order to maintain the consistency of terms used in the translation process. However, the use of TM in free CAT tools is different with the use of TM in paid CAT tools. In free CAT tools, the translator has to upload or create TM by themselves.

The Machine Translation (MT) is integrated within free CAT tools. With the MT feature switched on, the free CAT tool will suggest machine translated translations of unknown terms, which the translator can review and accept or reject. The other features of free CAT tools are fuzzy matching, match propagation, simultaneous processing of multiple-file projects, simultaneous use of multiple translation memories, user glossaries with recognition of inflected forms, document file formats include Microsoft Word, Excel, Powerpoint (.docx, .xlsx, .pptx) and many other features.

### **Paid CAT Tools**

This section provides the information about several kinds of paid CAT Tools. Four of them are SDL TRADOS 2015, MemoQ 2013, Déjà Vu X3, and Swordfish Translation Editor. Basically, each of the application shares different features as well as functions which differ them with one and another. The first application is SDL Trados. It offers a complete CAT tool used

by over 200,000 professionals users for translating, managing documents and projects with the price of \$2895. The second application is MemoQ2013. With the price of \$770, this application offers an easy access to a wide variety of input and output file formats including files coming from or going into other tools. It also comes with fast and reliable support and a wide range of free, live or pre-recorded educational materials. The third application is Déjà Vu X3. This \$520 translation application becomes a very useful application for translator. It offers some great features such as fuzzy match repair, intelligent, Autowrite, XLIFF export in professional edition, and new PDF. The last Application is Swordfish Translation Editor. This application costs cheaper than the other three, it costs \$345 for the paid version. With this application, the translators will be supported by the exchanging TMX (Translation Memory eXchange) and a super fast internal database server.

Although those applications share some distinctive elements, they also share the same things in common. For example, each of the applications uses Translation Memory to help the translator translate their work. Furthermore, the fast functionality also becomes their similarity in which it will ease the users when using the application. Another similarity is the license which is usually longer than the free version. Each of applications has its own license which is different from one and another. Generally, the license for the free version can only stay for months, but for the paid version, it can stay for years and it is updatable.

*Table 1. Advantages and Disadvantages of Free CAT Tools and Paid CAT Tools*

	<b>Advantages</b>	<b>Disadvantages</b>
<b>Free CAT Tools</b>	<ol style="list-style-type: none"> <li>1. Can be accessed freely</li> <li>2. Provide the same basic features with Paid Version</li> </ol>	<ol style="list-style-type: none"> <li>1. Not sophisticated interface</li> <li>2. Lower speed</li> <li>3. Limited file formats</li> <li>4. Limited TM and glossaries</li> <li>5. License (monthly)</li> </ol>
<b>Paid CAT Tools</b>	<ol style="list-style-type: none"> <li>1. User Friendly interface</li> <li>2. High speed batch of functionality</li> <li>3. Wide range of file formats</li> <li>4. unlimited number of TM and Glossaries</li> <li>5. License (Year)</li> </ol>	<ol style="list-style-type: none"> <li>1. Higher price</li> <li>2. Need to update license and version</li> </ol>

**ABOUT WORDFAST PRO**

Since the growing number of the computer assisted translation tool (CAT Tool), the company producing the application starts to make the applications commercial since the needs of using them are everyday developed. The company provides some versions of translation applications to ease the users in choosing which versions they want to use. Recently, the versions offered by the company are the demo version and the paid version. Each of the version might not provide the translators with the same features. There might be some features missing in the demo version compared to the paid version. For instance, the license for the demo version will last only at least a month. On the contrary, the license for the paid or pro version will last for years.

Thus, this condition will put the translators using the demo version in difficulties since the license will not last longer. If they want to purchase the pro one, the price for each application will be very much expensive as it has the longer license and the complete features.

Wordfast, as the world's leading provider of platform-independent translation memory software offers powerful desktop, server, and web-based solutions designed to meet the needs of freelance translators, translation agencies, multinational organizations, and educational institutions worldwide. It, as one of the translation applications, also offers four types of products. They are the classic type which is the tool for translators working in Microsoft (MS) Word, the pro type which is the stand alone application

for any platform, the anywhere type which is the world's only free and completely confidential web-based TM tool, and the last is the server type which is the power of server-based TM at a fraction of the cost of competitors. However, in this article the pro type will be discussed further so that the translators or the users can look at the complete features before they buy the application.

When using the demo version of Wordfast, undoubtedly, the license would not be the same as in the paid or pro version. Commonly, the license for the demo version will only stay less than a year. However, by using the pro version, users can have a longer version; the users can use it for years. The Wordfast application offers a longer licence which is good for the settled translators. With a three-year license, the users will need to pay approximately 400 Euro to own this pro application. Indeed, to own the pro version of Wordfast, the users or the translators will have to spend a lot of money. However, after buying the pro version of this application, they will find a lot of features which can be very helpful for them when doing the translation process. There are four features offered by the paid version of Wordfast according to [www.Proz.com](http://www.Proz.com)

The first feature which the translator will obtain when buying the Wordfast pro version is that this application has a user-friendly interface with customizable view and shortcuts. With this feature, the translators or the users will be much easier in using the application. Moreover, with the user-friendly interface, the users will not get bored easily since they can customize the view and the shortcuts as well. This feature will not be found in the demo version as in the demo version, the interface cannot be adjusted or customized and usually, the interface is not as user-friendly as in the pro version or in the paid version.

The second feature is it offers a high-speed batch processing functionality. In the pro version, the users or the translators will not be difficult to do the translation process since it provides a high-speed processing function. However, in the demo version, the speed offered by the application will not be as fast as in the paid version. Hence, in the demo application when operating the application as well as doing the translation process, the users or the translators will find it slower than in the paid version.

Another feature in the paid or pro version of Wordfast is it supports for a wide range of file formats. With the wide range of file formats, users or translators will be able to translate many kinds of texts from different file formats so that they can maximize their work. In contrast, the limited wide range of file formats is commonly found in the demo version.

Having the access to an unlimited number of TMs and glossaries becomes the next feature offered in the paid version of Wordfast. Since the Wordfast translating application is a translation-memory based application, the users or the translators will need to have their own translation memories when they want to use it. By having translation memories, the users or the translators will very much be helped since they can access the words which have been stored in the translation memories. The paid version of Wordfast provides an unlimited number of TMs and glossaries which becomes the biggest advantage for the users as they do not need to make or to store the TMs and it will be easy for them to use it. Unlike the paid or the pro version, the Wordfast demo version does not offer the translation memories. Hence, the users or the translators will have to make their own translation memories before doing the translation activity. It of course puts them in difficulties since it will take time for them

to create TMs as many as possible in order to start using this application.

In general, this article aims at giving a brief and concise explanation of how to deal with Wordfast. However, in this section, the version used is demo version. The concept of Wordfast will be presented as follow:

### Steps Using WordFast Pro



Figure 2. The concept of WordFast (copyright Wordfast manual book, LLC 2009)

Here are several important information will be presented in this paper: creating a project, creating a translation memory, defining colors and scores and also translating a project.

*name, source locale, and target locale.* A unique project name helps the translator in differentiating with other projects. It is recommended to use the client name as the project name. Source locale and target locale as shown in figure 3 below are the source language and the target language that will be used in the project. If either one of them is incorrect, files or translation project could not be opened.

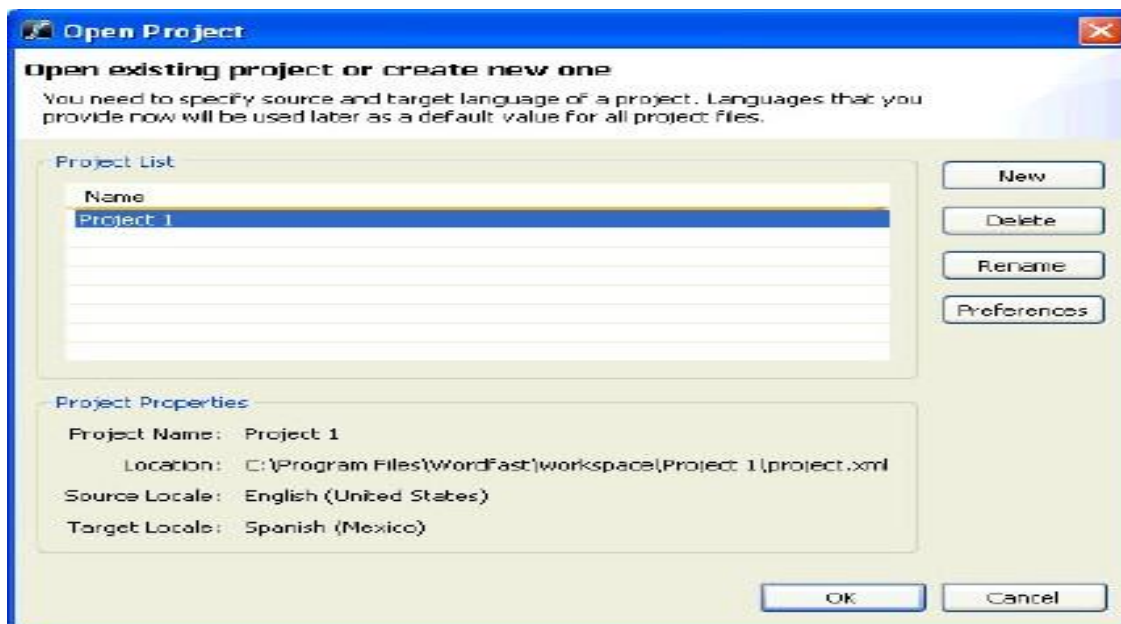
### Creating a Project

In creating a project, there are three important fields to be considered; *project*



Figure 3. Creating a Project

Thus, three blank spaces should be filled appropriately; Project name, Source locale and Target Locale. Source locale (source language) and Target Locale (target language) can be chosen by clicking the blue arrow on the right side. After all, the project name appears in the project list as shown in figure 4 below.



*Figure 4. Selecting a Project*

In addition, it could be more than 2 projects appear in the project list depend on how many project that the translator has. Therefore, the translator should select the project appropriately.

Another important stage in creating a project is preferences which refer to Translation Memory as shown in figure 5 below.

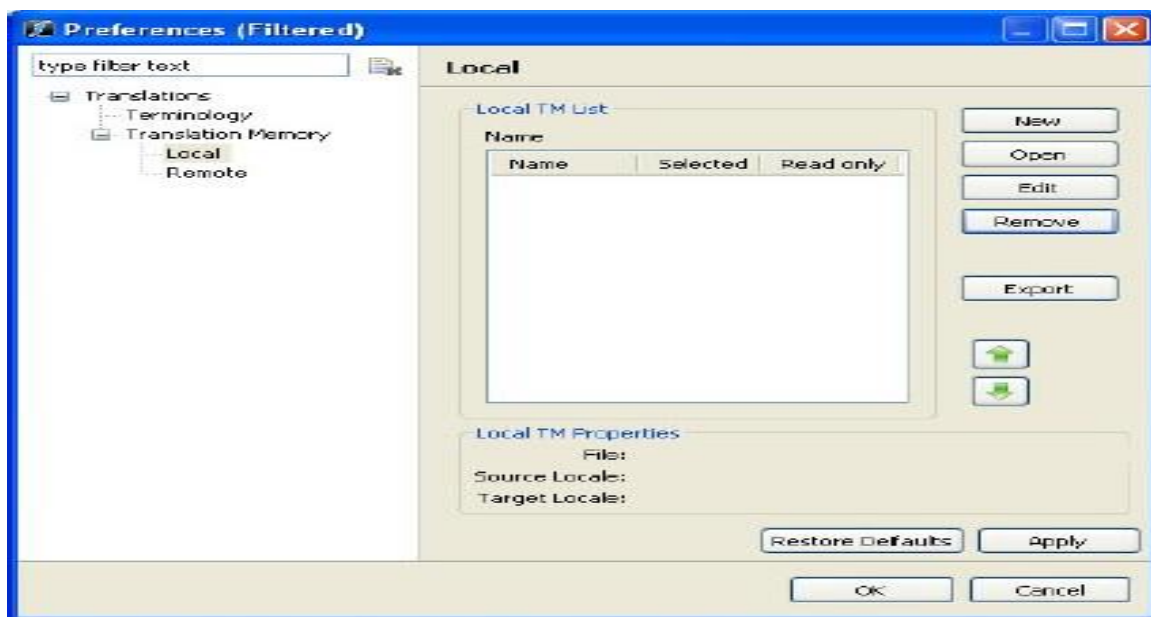


Figure 5. Choosing TM

Figure 5 refers to **Translation Memory** which will be used in the project later on. On the left side of the dialogue box, there are two **Translation Memory; Local (all TM from your PC) and Remote (LAN connection with others)**. In this stage, the translator can decide which translation memory used in the current project and even creates a new translation memory.

### Creating a Translation Memory

The dialog box as shown in figure 6 allows the translator to decide which translation memory will be used on our project. We can **open** translation memory from the previous project or create the **new** one. In this case, creating a **new** translation memory is the main discussion.

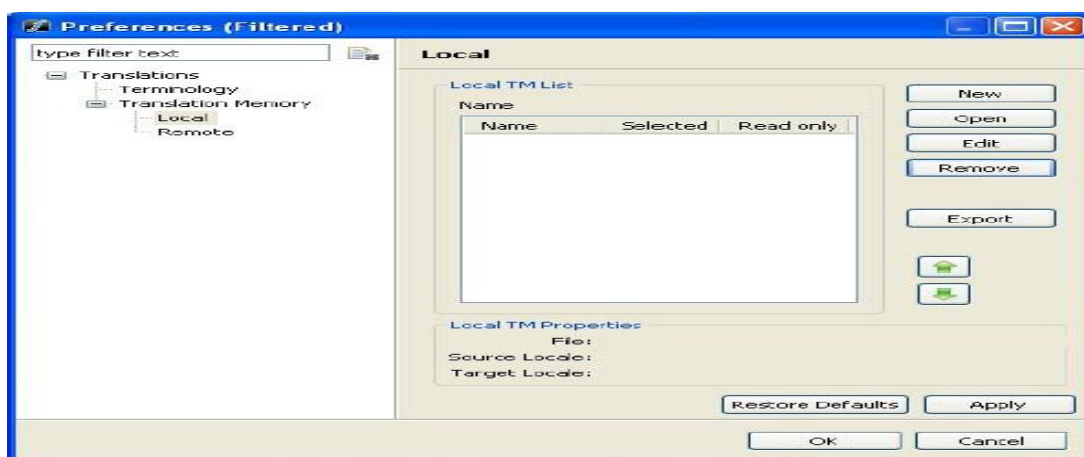


Figure 6. Choosing TM

This dialogue box allows us to decide which translation memory will be used on our project. We can **open** translation memory from the previous project or create the **new** one. In this case, we will create a **new** translation memory.



The New Local TM dialog box appears as follow. There are 4 fields appear in the figure 7. All fields should be filled appropriately, especially for the **source locale** (source language) and **target locale** (target language).

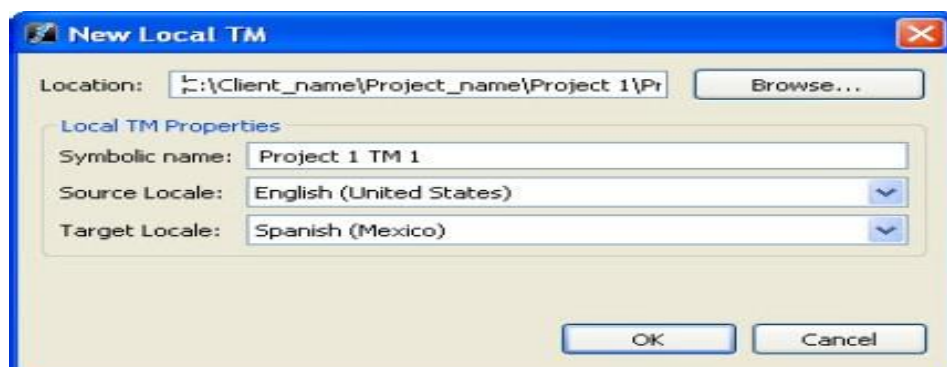


Figure 7. Opening New Local TM

There are 4 fields appear in the figure 7. Make sure you fill all the fields appropriately, especially for the **source locale** (source language) and **target locale** (target language).

1. The New Local TM dialog box appears. Please fill in all the blank fields.



Figure 8. Creating TM

2. The newly created local TM name appears in the Local TM List and the properties appear at the bottom of the dialog box.

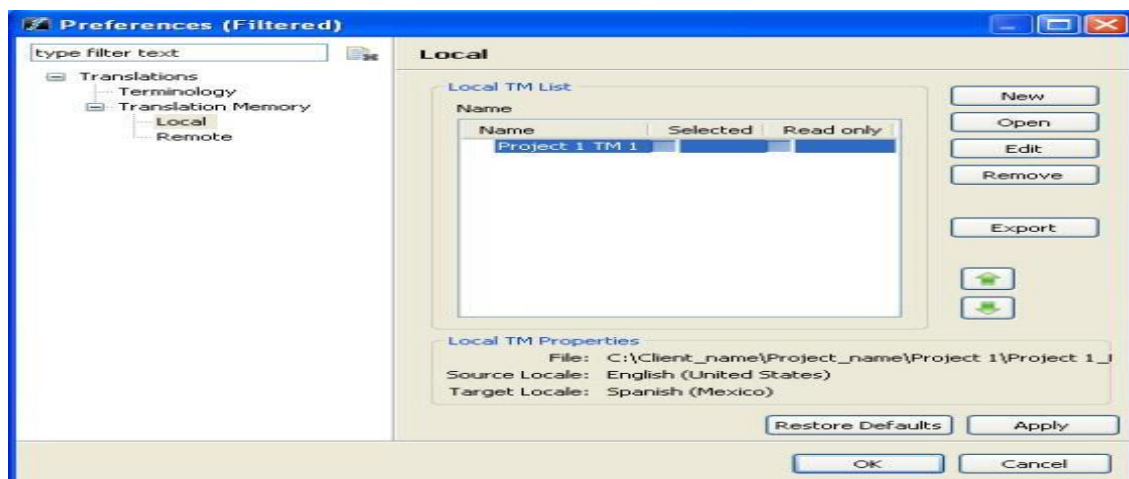


Figure 9. The Created TM

A new Translation Memory is ready to use. Make sure that you give check on boxes: selected (to be used as main memory in translating project and also writable. Meaning that you COULD UPDATE the translation memory) or read-only (only used as references and not writable. Meaning that you COULD NOT UPDATE the translation memory)

### Opening a File

1. Click **File > Open**, select file for translation and click **Open**.

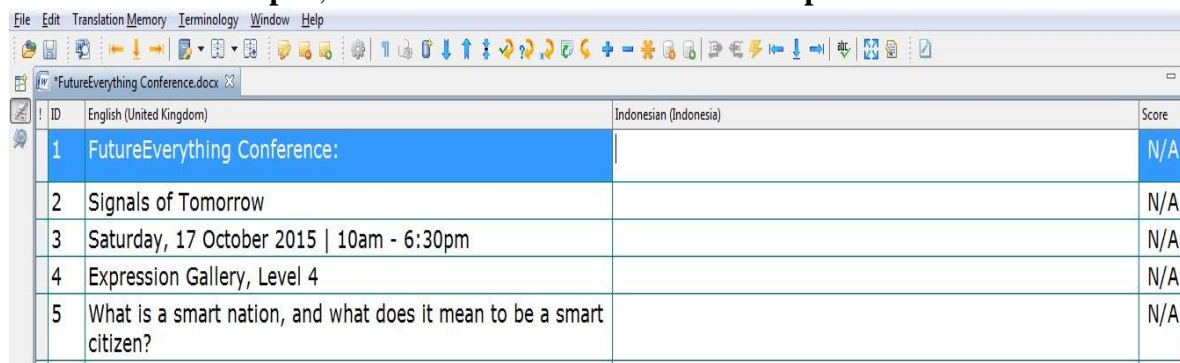


Figure 10. Opening a File

Right after you open the file, you will see it in your workspace. Before you start translating a project, it is necessary to define colors which appear on your workspace later on.

### Defining Colors

Color	Representation
Yellow	Fuzzy match
Grey	No match or NA
Green	100% match
Pink	Segment modified since the original file was created
Purple	Segment modified and updated to translation memory

Figure 11. List of Colors

It should be taken into account about colors used/appears in Word fast. In general the colors give details information about the quality of the translation itself.

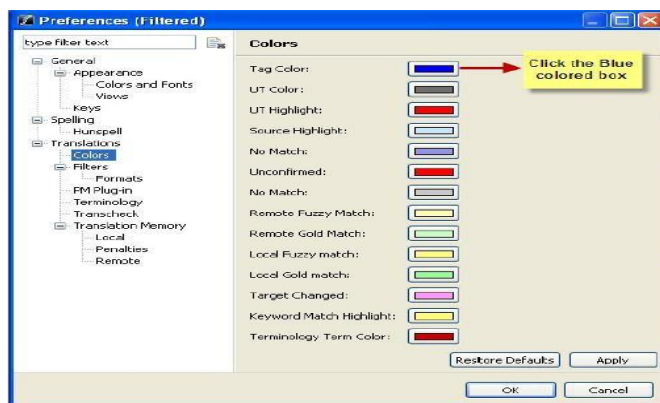


Figure 12. Table of Colors

Each color can be edited. In other words, you can use your own favorite colors as the coding in the Word Fast. The process is very easy to do since you only have to click the icon of the color that needs to be change then replace it with the color that you like.

1. The first translatable segment will appear in a blue background

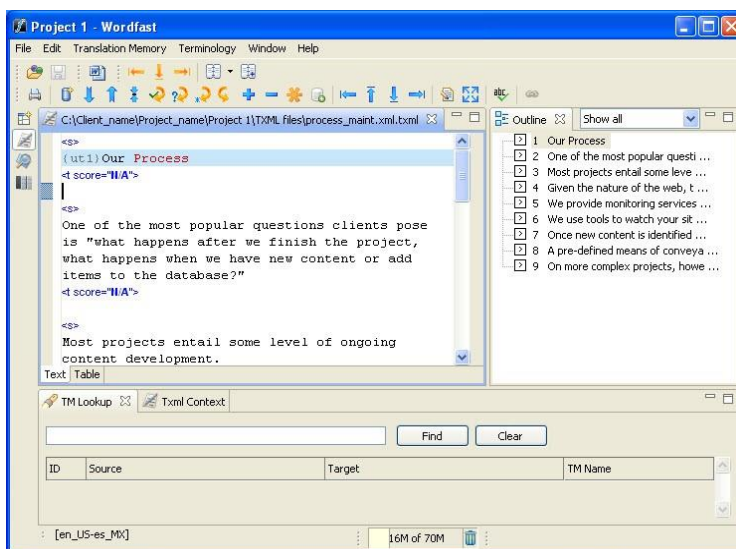


Figure 13. Segmentation

The dialogue box is split into two. The right side is the outline of the project which needs to be translated. The left side is the progress of the translation work. The blue background is the translatable segment.

2. Type the target segment. The typed target segment will appear in a pink background as shown in the screenshot below.

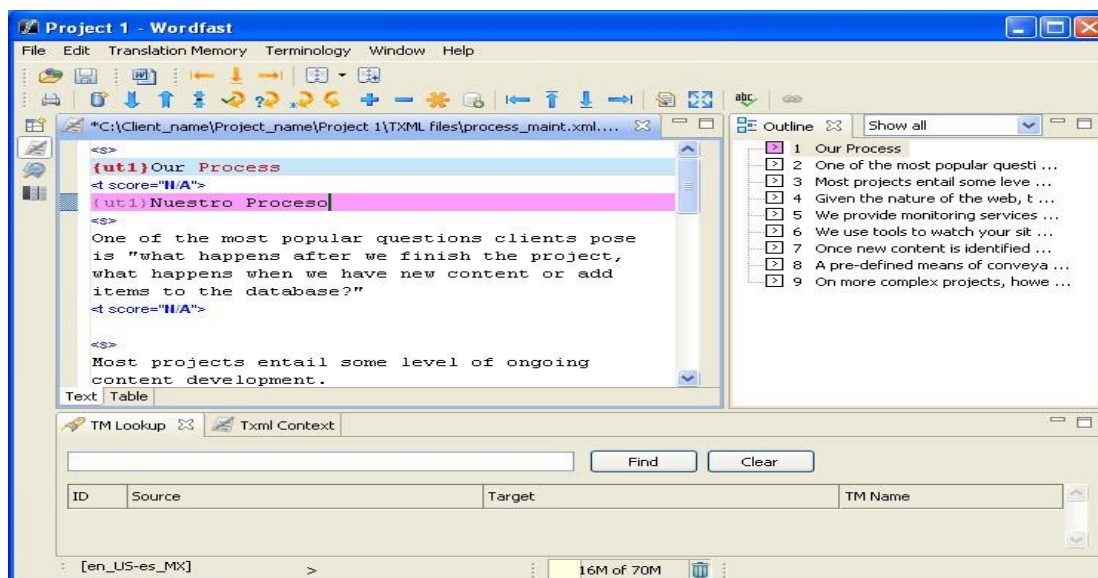


Figure 14. Translating Project

You can select the icon **Translation Memory** then click **Next Segment** or press **Alt+Down**. The typed target segment is saved to the TM and the cursor moves to the next segment. After translating all the source segments, you select **Translation Memory** then click **Commit to TM** or press **Alt+End** to update the TM before closing the file. The leveraging repetitive content option can be used when there are repetitive segments in a file. For instance, if there are multiple instances of the phrase "Our Process" then the translator needs to type the translation only once. The remaining segments are leveraged automatically.

### *Saving a File*

There are several steps in saving a file with different format. First, you can click **File** then click **Save** or **Ctrl+S** to save the currently open file. Second, you can click **File** then click **Save translated file** to save PPT, XLS or DOC files. Third, you can click **File** then click **Save As** to save and rename the file. Fourth, you can click **File** then click **Save All** to save all open files.

### **THE TRANSLATION RESULTS OF USING WORDFAST PRO AND OMEGAT**

The table below shows the translations results of using Wordfast Pro as a paid CAT tool and OmegaT as a free CAT tool. By showing and analyzing the translation results, it is hoped that the article does not only provide the theoretical data but also empirical data. Therefore, the article will persuade those who intend to start using CAT tools especially WordFast Pro.

Table 2. Comparison of Translation Results Using WordFast and OmegaT

Source Text	Target Text: WordFast	Target Text: OmegaT
<p><b>FutureEverything Conference: Signals of Tomorrow</b> Saturday, 17 October 2015   10am - 6:30pm Expression Gallery, Level 4</p> <p>What is a smart nation, and what does it mean to be a smart citizen? How are artists, designers, futurists and civic innovators playing with the technology that is weaving itself into the fabric of our cities, economies and infrastructure?</p> <p>The FutureEverything Conference will look at how life, work and play have been fundamentally transformed by technology, and will stimulate a national conversation in Singapore on the place of smart technology in society and culture.</p> <p>Speakers: Usman Haque / Dan Hill / Sara Watson / Scott Smith / Andrea Nanetti / Cheryl Chung / Tong Yee / Alexandra Deschamps-Sonsino / Ayesha Khanna. For more information on the speakers, click here.</p> <p>From Saturday to Sunday, ArtScience Museum will host a series of early prototypes for participatory art projects that seek to involve citizens in a playful, creative dialogue around the Singapore they imagine.</p>	<p><b>Konferensi FutureEverything Singapore: Signals of Tomorrow</b> [1]Sabtu, 17 Oktober 2015   10.00 - 18.30 <i>Galeri Ekspresi, Lantai 4</i>[1]</p> <p><i>Bagaimanakah bangsa yang cerdas itu, dan apa arti menjadi warga negara yang cerdas?</i> Bagaimana para seniman, desainer, tokoh futurisme, dan inovator kewarganegaraan memanfaatkan teknologi yang <i>menjalin diri ke sendi-sendi kota</i>, ekonomi, beserta infrastruktur kita?</p> <p><i>Konferensi FutureEverything akan menelaah bagaimana hidup, bekerja, dan bersenang-senang secara fundamental telah diubah oleh teknologi, sekaligus akan mendorong diskusi nasional mengenai Singapura sebagai negara dengan teknologi yang cerdas dalam sosial dan budayanya.</i></p> <p>Pembicara:Usman Haque / Dan Hill / Sara Watson / Scott Smith / Andrea Nanetti / Cheryl Chung / Tong Yee / Alexandra Deschamps-Sonsino / Ayesha Khanna Untuk informasi lebih lanjut mengenai TED2015 serta profil para pembicara, [1][2]klik di sini[3][4].</p> <p><i>Mulai Sabtu hingga Minggu, ArtScience Museum akan menyelenggarakan serangkaian prototipe awal untuk proyek seni interaktif guna mengundang keterlibatan warga dalam dialog</i></p>	<p><b>Konferensi FutureEverything Singapore: Signals of Tomorrow</b> Sabtu, 17 Oktober, 2015   10:00-18.30 <i>Expression Gallery, Lantai 4</i></p> <p><i>Apa adalah bangsa yang cerdas, dan apa artinya menjadi warga pintar?</i> Bagaimana seniman, desainer, futuris dan inovator sipil bermain dengan teknologi yang <i>menenun itu sendiri ke dalam kain kota-kota kita</i>, ekonomi dan infrastruktur?</p> <p><i>The FutureEverything Konferensi akan melihat bagaimana kehidupan, bekerja dan bermain telah fundamental diubah oleh teknologi, dan akan merangsang percakapan nasional di Singapura pada tempat teknologi pintar dalam masyarakat dan budaya.</i></p> <p>Pembicara: Usman Haque / Dan Bukit / Sara Watson / Scott Smith / Andrea nanetti / Cheryl Chung / Tong Yee / Alexandra Deschamps-Sonsino / Ayesha Khanna. Untuk informasi lebih lanjut tentang speaker, klik di sini.</p> <p><i>Dari Sabtu ke Minggu, ArtScience Museum akan menjadi tuan rumah serangkaian prototipe awal untuk proyek-proyek seni partisipatif yang berusaha untuk melibatkan warga dalam, dialog kreatif bermain di</i></p>

Source Text	Target Text: WordFast	Target Text: OmegaT
<p>These prototypes are the early-stage results of FutureEverything Singapore’s Signals of Tomorrow Innovation Lab, which aims to devise imaginative ways to engage the public in envisioning the future of technology and a Smart Nation.</p> <p>Find out more: FutureEverything Singapore: Signals of Tomorrow Innovation Lab</p> <p>FutureEverything Singapore is a partnership between FutureEverything, an award-winning innovation lab for digital culture and annual festival established in Manchester, and Singapore’s Infocomm Development Authority (IDA). The festival is under the umbrella programme, the Festival of Tech.</p>	<p>kreatif yang menyenangkan <i>seputar</i> Singapura yang mereka <i>impikan</i>.</p> <p><i>Berbagai prototipe</i> ini merupakan <i>hasil awal dari Lab Inovasi Signals of Tomorrow</i> yang diselenggarakan oleh FutureEverything Singapura dan bertujuan untuk merancang cara-cara imajinatif yang akan mengajak publik berinteraksi untuk membayangkan masa depan teknologi dan Bangsa yang Cerdas.</p> <p><i>Cari tahu</i> lebih lanjut Lab Inovasi FutureEverything Singapura: Lab Inovasi Signals of Tomorrow</p> <p>FutureEverything Singapura merupakan kerja sama antara FutureEverything, sebuah lab inovasi pemenang penghargaan yang didirikan di Manchester dan ditujukan untuk festival budaya digital dan tahunan, bersama dengan Infocomm Development Authority (IDA) Singapura. Festival ini berada di bawah <i>bendera</i> program Festival Teknologi.</p>	<p>sekitar Singapura mereka <i>bayangkan</i>.</p> <p><i>Prototipe</i> ini adalah <i>hasil tahap awal dari FutureEverything Sinyal Singapura of Tomorrow Innovation Lab</i>, yang bertujuan untuk menemukan cara-cara imajinatif untuk melibatkan publik dalam membayangkan masa depan teknologi dan Bangsa Cerdas.</p> <p><i>Temukan</i> lebih banyak lagi: FutureEverything Singapore: Signals of Tomorrow</p> <p>FutureEverything &lt;t0 /&gt; Singapura adalah kemitraan antara &lt;t1 /&gt; FutureEverything &lt;t2 /&gt;, laboratorium inovasi pemenang penghargaan untuk budaya digital dan festival tahunan didirikan di Manchester, dan &lt;t3 /&gt; Infocomm Singapura &lt;t4 /&gt; Development Authority (IDA). Festival ini di bawah <i>payung</i> &lt;t0 /&gt; Program &lt;t1 /&gt;, Festival Tek.</p>

From the table above, it can be found that the translation results of WordFast and Omega have several differences. In general, there are two major difference; diction and idioms/expressions. Both, either WordFast or Omega has its own translation memory which contains words, phrases or even clauses that have been restored to it. In the source text, the author writes the word “smart”. Instead of “pintar” as translated by OmegaT,

WordFast translated the word “smart” into “cerdas”. In this context, “cerdas” seems to be more appropriate and powerful, rather than “pintar”. Another example from the source text is the word “stimulate”. In Indonesian, the word “stimulate” could be translated into “merangsang”. However, it seems less appropriate and powerful in this context. Wordfast offers “mendorong” which sounds appropriate compare to OmegaT. These differences are influenced by translation memory used in the

software. Wordfast has huge range of translation memory which could be leveraged within context. On the other hand, OmegaT has translation memory limit in leveraging the translation memory which show less suggestion.

The second difference is the terminology. It is related with technical words or expression used in a particular subject or context. The text used in this section is a poster design which tries to promote a conference and attract people to participate in the conference. Taken as the example, in the source text it is written “weaving itself into the fabric of our cities”. OmegaT translated it into “menenun itu sendiri ke dalam kain kota-kota kita”. Meanwhile, WordFast translated the same part into “menjalin diri ke sendi-sendi kota” which sounds more appropriate. Pretty similar with translation

memory, Wordfast enables the user to leverage the terminology and put it into different context. So, it offers various range of terminology compare to OmegaT.

## CONCLUSION

It is suggested for beginner translators or prospective translator to use Wordfast which is designed to improve translators work. As shown in the previous sections above, it provides a collaborative and sophisticated feature in where translation memory (TM) files can be used efficiently. In addition, Wordfast is a flexible application that can work with desktop either TM files or interact directly with a powerful TM server application. It can also operate as a stand-alone tool to supplement existing translation workflows.

## GLOSSARY

### **CAT tool:**

a computer program that helps to translate text documents more efficiently

### **Fuzzy Match:**

find segments which match and do not match with the rate of 0% - 100%

### **LAN (Local Area Network):**

a [computer network](#) that interconnects computers within a limited area such as a residence, school, laboratory, or office building

### **Match propagation:**

automatically applying a given translation throughout your document or project (also means error propagation).

**Segment:** sentences which are ready to be translated

**Server:** a computer program or a machine that waits for requests from other machines or software and responds to them.

**Source Local:** the original language

**Target Local:** the translated language

**TM:** translation units in a database

**Workflow:** specialized translation scenario using CAT tools

## REFERENCES

- Carrove, M. S. (1999). *Towards a theory of translation pedagogy*. Doctoral thesis, Universitat de Lleida, Spain.

Cocci, L. (2009). CAT tools for beginners.  
*Translation Journal*, 13 (4).

*WordFast Pro Manual*. Copyright ©  
Wordfast, LLC 2009. All rights reserved.

*Software comparison tools*. Retrieved  
November 4<sup>th</sup> 2015,  
from [http://proz.com/software-comparison-  
tools/2?sort=default](http://proz.com/software-comparison-tools/2?sort=default).

<http://wordfast.com/product>  
<http://www.omegat.org/en/omegat.html>